



**VIRTUAL PROGRAM
JUNE 1 – JULY 28**



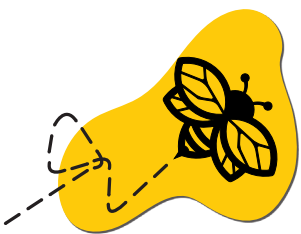


LARGER THAN LIFE



THANK YOU TO OUR SPONSORS





BUGS!

Scavenger Hunt

1. What can you do in your own backyard to help moths?
2. Caterpillars turn into what when they grow up?
3. How many spots can a lady bug have?
4. How long is a Carolina mantis?
5. Katydid's try to camouflage as what?
6. Dragonflies start their lives as an egg and larva in what habitat?
7. Why are bees important?
8. What colors can ants be?
9. Scorpions have how many legs plus pinchers?
10. Where do dung beetles lay their eggs?



SPONSORED BY:



ATLAS MOTH

FAMILY Saturniidae

SUBSPECIES Silk Moth

RANGE The Atlas Moth lives in Asia, from India to the Philippines and south to Indonesia.

ACTUAL SIZE They have a wingspan of up to 12 inches and a total surface area of as much as 62 square inches.

BIG BUGS! SIZE 6 feet wide and 7 feet tall! That's 6 times larger than the average Atlas Moth.

ACTUAL WEIGHT 0.00661387 pounds

LIFE SPAN Between 10-12 weeks.

SPEED Slow

DIET They don't eat as adults because they do not have fully formed mouths. They live on the reserves they store as caterpillars.

PREDATORS Birds, lizards, ants and parasites.

FUN FACTS

- As in most silk moths, females are noticeably larger and heavier than males, while males have broader antennae.
- The Atlas Moth is one of the largest moth species in the world.
- Their silk cocoons are used to make products.



SPONSORED BY:

WIELAND'S
Lawn Mower Hospital



Count on it.

Peoria • Washington

BEE

SCIENTIFIC NAME Anthophila

RANGE Every continent except Antarctica.

ACTUAL SIZE About 0.08-1.6 inches

BIG BUGS! SIZE 5 feet tall

ACTUAL WEIGHT 0.00025 pounds

LIFE SPAN Queen Bee: 3-4 years; Worker Bee: 18 days

SPEED 20 mph

DIET Nectar and Pollen. The nectar is for energy and the pollen provides protein and other nutrients.

PREDATORS Skunks, bears and hive beetles.

FUN FACTS

- Almost 90% of wild plants and 75% of leading global crops depend on animal pollination. One out of every three mouthfuls of food depends on pollinators such as bees.
- 4,000 bees together weigh only one pound.
- Bees have smelly feet to distinguish their own scent.



SPONSORED BY:



PLUM JUDY BUTTERFLY

FAMILY Punches and Judies

RANGE Asia

ACTUAL SIZE Wingspan is 14 inches to 17 inches

BIG BUGS! SIZE 4.5 feet tall, over 3 times their actual size

ACTUAL WEIGHT .0105 ounce

LIFE SPAN 2-4 weeks

SPEED 5-10 mph

DIET Sweet nectar from flowers

PREDATORS Birds, lizards, ants, wasps, snakes, rodents, monkeys and rats

FUN FACTS

- The eggs of the butterfly are laid on host plants belonging to the family Myrsinaceae.
- It has a habit of landing and turning around almost immediately after alighting, it is believed it does this to evade predators.

A note from our sponsor



Proud to support the
Peoria Park District.

CEFCU

Not a bank. Better. ®



Insured
by NCUA

[cefcu.com](https://www.cefcu.com)





CATERPILLAR

FAMILY Animalia

SUBSPECIES Over 21,000 subspecies

RANGE Worldwide

ACTUAL SIZE 1/2 to 4 inches

BIG BUGS! SIZE 9 feet long (that's 43 times larger than the average caterpillar!)

ACTUAL WEIGHT 1/10th of an ounce

LIFE SPAN Most butterfly and moth larvae complete metamorphosis in a few months and turn into butterflies and moths.

SPEED 23.4 inches per minute

DIET Herbivores: leaves, plants and flowers

PREDATORS Birds, wasps, mammals

FUN FACTS

- Caterpillars are the larvae of butterflies and moths.
- A caterpillar has just one job- to eat!
- They have as many as 4,000 muscles in its body.



SPONSORED BY:



DRAGONFLY

SPECIES There are more than 5,000 known species of dragonflies.

ACTUAL SIZE 2-5 inch wingspan

BIG BUGS! SIZE 9 feet long, 12 feet wide and 6 feet tall

ACTUAL WEIGHT 0.0325 ounces

LIFE SPAN A few weeks up to a year.

SPEED 35 mph

DIET Insects, they catch them with their feet

PREDATORS Arthropods, reptiles, fish, water shrews, frogs and other insects.

FUN FACTS

- Dragonflies were some of the first winged insects to evolve, some 300 million years ago.
- In their larval stage, which can last up to two years, dragonflies are aquatic and eat just about anything— tadpoles, mosquitoes, fish, other insect larvae and even each other.
- At the end of its larval stage, the dragonfly crawls out of the water, then its exoskeleton cracks open and releases the insect's abdomen, which had been packed in like a telescope. Its four wings come out, and they dry and harden over the next several hours to days.



KATYDID

FAMILY Tettigoniidae

SUBSPECIES More than 8,000 species are known.

RANGE Every continent except for Antarctica.

ACTUAL SIZE .4 - 2.4 inches

BIG BUGS! SIZE 15 feet long (that's 75 times bigger than it actually is)

LIFE SPAN Less than a year.

SPEED Slow and awkward on the ground.

DIET Primarily leaf-eaters

PREDATORS Birds, lizards, spiders, frogs, bats and small rodents.

FUN FACTS

- Katydids have wings, but they cannot fly.
- They are great to have around the garden as they feed on insects, and they also help pollinate some flowers.
- To attract a mate, male katydids produce an ear splitting hum that can be louder than a lawn mower.



SPONSORED BY:



DUNG BEETLES

FAMILY Scarabaeidae

RANGE Worldwide, on every continent except Antarctica.

ACTUAL SIZE 0.19 inches to 1.18 inches

BIG BUGS! SIZE 6 feet tall (that's more than 72 times the average sized Dung Beetle!)

ACTUAL WEIGHT Up to 3.5 ounces

LIFE SPAN 3 years

SPEED They can fly up to 18 mph

DIET Dung (aka poop!)

PREDATORS Mammals, birds, reptiles, amphibians, and insects

FUN FACTS

- The dung beetle can push objects many times its own weight.
- It cleans up the excrement from the environment, controls the fly population, and also helps to enrich the soil. Dung beetles are one of nature's major scavengers in just about every ecosystem on the planet.

A note from our sponsor

ARE HR CHALLENGES **BUGGING** YOU?

HR Fit is here to help with services such as:

- Critical & Generalist HR Support
- Crisis Consultation
- Recruiting & Staffing Needs Analysis
- HR Policy & Practice Review
- Employee Handbook Development
- Coaching, Training & Development
- HR Administration
- Employee Relations
- Compensation Strategy

Contact us today at **309.863.1202**
or **erik@hrfitnow.com** to arrange
a consultation.





SPONSORED BY:



LADYBUG

RANGE Over 5,000 different species in the world

ACTUAL SIZE 0.3-.04 inches

BIG BUGS! SIZE 7.5 inches long and 4.5 inches tall

LIFE SPAN 2-3 years

SPEED They can fly up to 37 mph

DIET Omnivore

PREDATORS Birds are ladybugs' main predators, but they also fall victim to frogs, wasps, spiders, and dragonflies.

FUN FACTS

- Ladybugs are also known as lady beetles or ladybird beetles
- They are considered beneficial as they eat other plant-eating insects
- Ladybugs are colorful so they can warn predators not to eat them!
- They are beetles, not bugs!



SPONSORED BY:



HONDA

Bob Lindsay

WEAVER ANTS

FAMILY Ants

RANGE Australia and South East Asia, particularly Philippines.

ACTUAL SIZE 0.3-.04 inches

BIG BUGS! SIZE 3 feet long

LIFE SPAN 4-12 years in the wild

SPEED 12 mph

DIET Weaver ants farm scale bugs for their honeydew, they also eat small insects.

PREDATORS Spiders and caterpillars

FUN FACTS

- They live in the Tropics and spin nests out of silk and leaves. The silk fibers are made by weaver ant larvae and produced from their abdomen. The workers then carry the larvae in their jaws as they weave.



SPONSORED BY:

CEFCU

Not a bank. Better. ®

PRAYING MANTIS

RANGE

Most species live in the tropical rainforest, although others can be found in deserts, grasslands and meadowlands.

ACTUAL SIZE

2-5 inches

BIG BUGS! SIZE

12 feet long

LIFE SPAN

10-12 months

SPEED

1.5 mph

DIET

Carnivores: hummingbirds, warblers, sunbirds, honeyeaters, flycatchers, frogs and lizards.

PREDATORS

Frogs, lizards, birds and certain kinds of spiders.

FUN FACTS

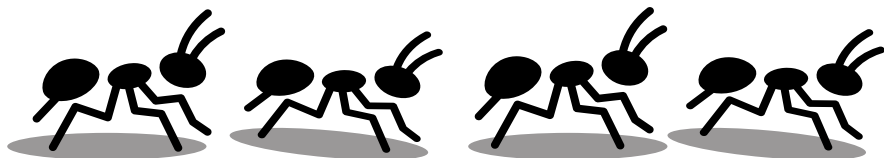
- Mantises are the only insects capable of turning their heads from side to side.
- They only eat live food.
- Praying mantises are supremely gifted in camouflage.

A note from our sponsor



Mr. Rooter[®]
P L U M B I N G

a **neighborly** company



A note from our sponsor

**PROUD SUPPORTER
OF BIG BUGS!**



HONDA

Bob Lindsay





RED ANT

KINGDOM Animalia

SUBSPECIES Over 200 subspecies

RANGE Florida, Georgia, South Carolina, Louisiana, Mississippi, Alabama, and parts of North Carolina, Virginia, Tennessee, Arkansas, Texas, Oklahoma, New Mexico and California.

ACTUAL SIZE 1/16- 1/5 inch long

BIG BUGS! SIZE 3 feet long

LIFE SPAN Small workers live 1-2 months, Medium workers live 2-3 months and Large workers live 3-6 months.

SPEED .63 inches per second

DIET Plants, microscopic organisms, invertebrates and vertebrates.

PREDATORS Armadillos, antlions, spiders, birds, horned lizards and of course, humans

FUN FACTS

- Red Ant workers change duties as they age.
- They are extremely aggressive.
- Ants are incredibly strong for their size. The leaf-cutter ant can carry up to 50 times as much as it weighs.



SPONSORED BY:



SCORPION

FAMILY Scorpionoidea

RANGE Deserts and dry grasslands.

ACTUAL SIZE The body is 2.25 inches long

BIG BUGS! SIZE The scorpion is 17 feet long

LIFE SPAN 4-12 years in the wild

SPEED 12 mph

DIET Carnivore: Insects, some eat lizards and small rodents.

PREDATORS Centipedes, shrews, owls, bats, hornbills and coyotes.

FUN FACTS

- Scorpions are arachnids and have eight legs like their cousins- spiders, mites and ticks.
- They give birth to live young rather than laying external eggs.
- Scorpions were around long before the first dinosaurs.
- They glow in UV light.

There's MORE to Explore!

Guided Hikes!

Check out a Guided Hike throughout our Peoria Parks! These hikes are guided by our naturalist staff and feature the wonders of the Illinois River Bluffs as they change over the seasons. Hikes are low-impact, unless indicated otherwise, and many are stroller or wheelchair accessible. Advance registration is required! Upcoming Hikes include:



- Lightning Bugs! at Forest Park on June 6th & June 7th
- Migratory Bird Hike on June 30th & July 6th
- Prairie Walk and Talk at Tawny Oaks on July 20th
- Reptile Round Up! at Forest Park on August 10th
- Singing Insects at Forest Park on August 23rd & August 25th

BUGS! for Dinner

Get ready for a creepy-crawly culinary adventure! Join us on June 23rd at the PlayHouse for Bugs for Dinner, where we're flipping the script on traditional dining. But that's not all – we're transforming the cave area of the PlayHouse into a bug bonanza with a temporary exhibit featuring preserved bugs and interactive bug facts for hands-on exploration. It's a bug-tastic event you won't want to miss!



Upcoming Events at Peoria Zoo

- Father's & Floats: June 16
- National Pollinators Week: June 17-23
- Capes & Crowns: June 22 & 23
- World Snake Day: July 16
- Pokémon Day: July 27
- World Tiger Day: July 29



**Leave Only
Footprints!**

- Forrest

